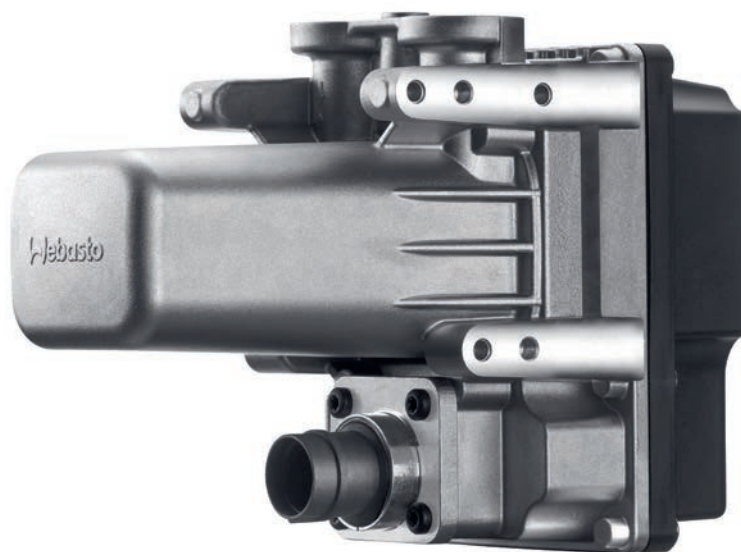


eThermo Top Eco 20 P, eThermo Top Eco 30 P

Fast, powerful, electrical



The eThermo Top Eco appeals to new groups of customers: Garage and carport owners, short-distance drivers as well as environmentally aware motorists.

The electric parking heater is integrated into the coolant circuit of the vehicle. A circulation pump provides for the homogeneous heating of the vehicle engine. At the same time, the vehicle fan propels the flow of warm air into the interior and right onto the windshield, which is therefore de-iced extremely quickly.

The heater is operated via an electric cable connected to a 230 V power outlet. Thanks to the integrated trickle charge function for 12 V batteries, the car battery is automatically charged throughout the entire duration of operation. The eThermo Top Eco can be conveniently controlled with a 16 V preset timer for the household socket. A suitable WLAN timer can be purchased from Webasto.

Key benefits at an glance:

- **Retrofittable for cars with all types of drive systems**
- **Extremely small and light, weighting only 1.4 kg**
- **No emissions in operation**
- **Simultaneous and consistent heating of the engine and the interior**
- **Attractive price compared to fuel operated heaters**
- **Reduced installation time compared to Thermo Top Evo**
- **Trickle charge function of the vehicle's battery**
- **Available in two heating capacity options**
- **Convenient control possible with a preset timer (optional)**

There is a choice of two heating capacities, depending on the fuse protection type of the home connection:

- eThermo Top Eco 20 P (2 kW)
for home connection with fuse protection of ≥ 10 A
- eThermo Top Eco 30 P (3 kW)
for home connection with fuse protection of ≥ 16 A



Car



Truck



Light Vehicles



Bus



Rail



Off-Highway



Defense



Special Vehicles

Technical specifications

Heater (230 V/12 V)	eThermo Top Eco 20 P	eThermo Top Eco 30 P
ECE approval number ECE R122	000531	000512
CE-Declaration of Conformity	Machinery Directive, 2014/30/EU (EMV), 2011/65/EU (RoHS), for further information see DoC	
Build type	Water heater (electrically powered)	
Grid connection (V) (50 Hz)	230	
Home connection fuse protection (A)	≥ 10	≥ 16
Heating capacity (kW)	max. 2	max. 3
Operating voltage (V) (50 Hz)	220 – 230	
Output voltage battery (V)	12 – 14	
Output voltage coolant pump (V)	12 – 14.5	
Nominal energy consumption beyond control range (kW)	2	3
Permissible ambient temperatures (in operation) (°C)	-40 to +80	
Dimensions (L x W x H) (mm)	181 x 91 x 133	
Weight (kg)	1.4	
IP protection class	IP5K4K, IPX9K	
Run time (h)	max. 2	
Max. trickle charge amperage (A) (incl. coolant pump operation)	8.5	

Coolant pump U4847 Econ	
Volume flow against 0.1 bar (l/h)	900
Rated voltage (V)	12
Operated voltage range (V)	10.5 – 17
Rated power consumption (W)	14
Dimensions of coolant pump:	
Length (mm)	109
Diameter (mm)	48.5
Weight (kg)	0.3

Scope of delivery

Heater, coolant pump U4847 Econ with adapter and holder, heater wiring harness, engine compartment cables, documentation. The heating start can be conveniently controlled with a customary 16 V preset timer for the household socket (not included in Webasto scope of delivery).

Available kits and accessories

- Installation kit
- Climate control kit
- 230 V house connecting cables in different lengths
- 230 V engine compartment extension cable
- Mounting accessories
- WLAN-Timer

Specific mounting part sets for various car models available.