

CERTIFICATION PROCEDURE INVOLVED - UNAUTHORISED DEVIATION STRICTLY FORBIDDEN

MOD No	REFERENCE	ISS	DATE	BY
35672	PRE PROD REL	T	04/05/11	AK
36378	PRODUCTION REL	A	18/08/11	J.W.
36618		B	18/09/11	J.W.

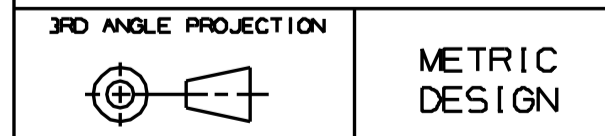
NOTES

- ENVIRONMENTAL PERFORMANCE: LIGHTBAR COMPLIES WITH BRITAX PMG LTD SPECIFICATION ENS054.
- LIGHTBAR COMPLIES WITH THE FOLLOWING ECE REGULATIONS: 10.03 - EMC
- SPECIFICATION: LAMP USES 6 x 4 0.5W LED LIGHTHEAD.
- OPERATING VOLTAGE: 10V - 30V DC.
- CURRENT CONSUMPTION:
12V: PEAK 2.0 AMPS
AVERAGE 0.8 AMPS
24V: PEAK 1.0 AMP
AVERAGE 0.5 AMPS
- FLASH RATE: 70 GROUPS OF 5 FLASHES PER MINUTE.
- CABLE SPECIFICATION: THIN WALL AUTOMOTIVE CABLE, ROUND BLACK OUTER SHEATH, TWIN CORE PVC INSULATED 24/0.2 (0.75mm) MANUFACTURED TO ISO 6722: 2006 (CLASS B)
- CABLES MAY BE STRIPPED.
- MINI LIGHT-BAR SUPPLIED IN PLAIN WHITE CARTON WITH BRITAX FITTING INSTRUCTIONS P892.
- THERE ARE NO USER SERVICABLE PARTS IN THIS PRODUCT.

MATERIAL	SPEC
FINISH	SPEC
EST. VOL.	MASS

TOOL No. -
DIMENSIONS IN MILLIMETRES
DO NOT SCALE IF IN DOUBT - ASK
DRAWN IN ACCORDANCE WITH BS 308

DIMENSIONAL TOLERANCES:
AS SPECIFIED



BRITAX PMG LTD
BESSINGBY INDUSTRIAL EST
BRILINGTON
EAST YORKSHIRE
YO18 4SJ



DRAWN	DATE	CHECKED	SCALE
A KRECHAD	04/05/11	SEE RELEASE /CHANGE NOTE	1:1

TITLE
CUSTOMER DRAWING
MINI LIGHTBAR LED
AMBER SINGLE BOLT

PART No.	Sht No.
A 101.00.LDV	1 of 2